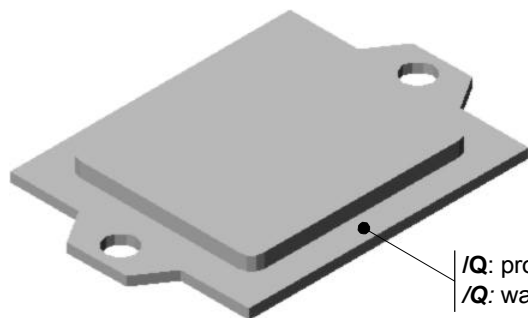
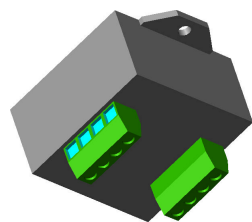
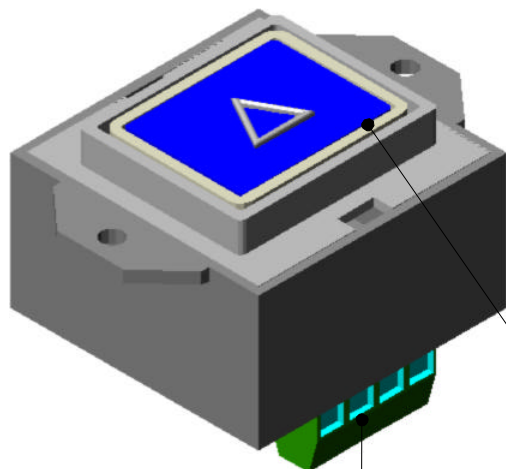


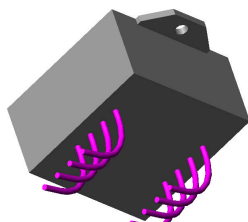
P1D + [tasto] + [led] + [alimentazione] + [connessione]
 [key] + [led] + [power supply] + [connection]



/Q: protezione stagna
 /Q: watertight protection



/M: uscita a morsetti
 /M: terminal board



/F: uscita a filo
 /F: wire exit



/PT: tasto in policarbonato trasparente
 /PT: transparent polycarbonate key

-3	-2	-1	0	1	2	3	4	5	6	7	8	9	10
11	12	13	14	15	16	17	18	19	20	21	C	R	RC
G	I	A	F			STOP	🔔	🔄	⏪	⏩	▽	△	↻



/BB: piastrina metallica smaltata blu
 /BB: blue enameled metallic plate

-5	-4	-3	-2	-1	0	1	2	3	4	5	6	7	8
9	10	11	12	13	14	15	16	A	I	S	F	R	
							STOP	🔔	🔄	⏪	⏩	▽	△

/BN: piastrina metallica colore naturale
 /BN: natural colour metallic plate

-5	-4	-3	-2	-1	0	1	2	3	4	5	6	7	8
9	10	11	12	13	14	15	16	A	C				
							STOP	🔔	🔄	⏪	⏩	▽	△



/MS: piastrina inox satinato /MS: glazed inox plate
 /ML: piastrina inox lucido /ML: polished inox plate

-3	-2	-1	0	1	2	3	4	5	6	7	8	9	10
11	12	13	14	15	16	17	18	19	20	21	C	R	RC
G	I	A	F			STOP	🔔	🔄	⏪	⏩	▽	△	↻

/N: NON LUMINOSO /N: NOT LUMINOUS
 /R: LED ROSSO /R: RED LED
 /G: LED GIALLO /G: YELLOW LED /12: 12 V ac/dc
 /B: LED BLU /B: BLUE LED /24: 24 V ac/dc
 /V: LED VERDE /V: GREEN LED

www.robortelli.com info@robortelli.com

ROBERTELLI ARDUINO

DESCRIZIONE / DESCRIPTION: Pulsante VS – Modelli VS Button – Models	DIS: A 13
	REV.: 2
	DATA: 04/11/06