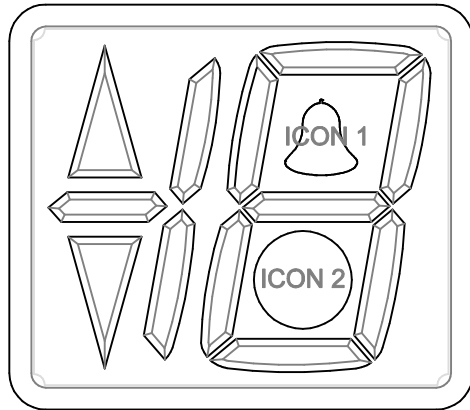


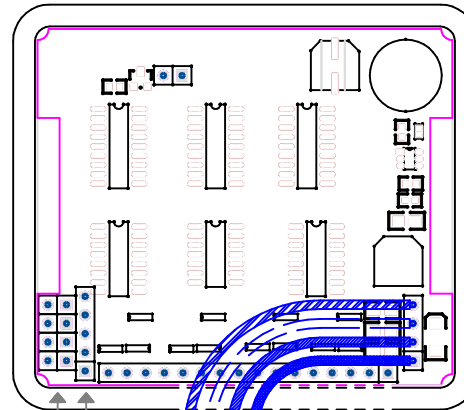
# SERIAL CONNECTIONS

12/24 V AC/DC

FRONT:

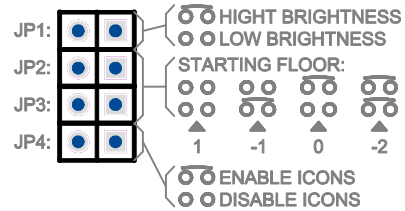


REAR:



PROGRAMMING PORT

JUMPER SETTINGS:



+ / AL POSITIVE  
 - / CL NEGATIVE  
 S / SD

TO SERQ8/12/24  
 DKS10/22  
 SRL24  
 SRS INTERFACE

PER LA VERSIONE SERIALE LE ICONE STANDARD SONO:  
 - FUORI SERVIZIO  
 - SOVRACCARICO (CON BUZZER)

